



FIELD OF USE FOR 1st-2nd-3rd DIVISION PRODUCTS

SIGILSTIK

WATER-BASED BITUMINOUS ELASTOMERIC ADHESIVE-SEALANT

PROBLEM

In the building trade the use of different types of building materials on roofs creates problems when they have to be sealed using highly elastic and durable products, which are resistant to UV rays and completely waterproof both at high and low temperatures.



DESCRIPTION

SIGILSTIK is a thixotropic paste obtained from a bituminous emulsion of selected distilled bitumens, additives and special resins that make the product particularly elastic and waterproof when it is dry with an optimal adhesion on various materials and a high resistance to UV rays.

SIGILSTIK is resistant to the corrosive action of many acids and atmospheric agents. Once the product has dried it has an optimal elongation.

FIELDS OF USE

SIGILSTIK can be used for bonding insulation panels to concrete and wooden surfaces. It perfectly adheres to glass, sheet

metal and other metallic surfaces. It is suitable for sealing and waterproofing various different building materials used in roofing such as: bituminous waterproofing materials, pipework, gutters and skylights. It can even be applied on slightly damp surfaces.

COVERAGE

Depending on the type of work being done, for bonding insulation panels on absorbent surfaces such as concrete or plaster, 200-300 g/m² of product is enough.

PRECAUTIONS

- Minimum application temperature + 5°C.
- While the product is in the cartridges it

will be ruined by frost.

- Tools can be cleaned with water before the product dries.
- Do not apply the product in bad weather conditions as the fresh layer may be washed away by the rain or ruined by frost.
- Non-porous surfaces such as aluminium, glass, metal, etc. should be cleaned with a trichloroethylene-based solvent before sealing.

SAFETY REGULATIONS

- Keep out of children's reach.
- Avoid letting the product come into contact with eyes or skin.
- Do not throw residues down the drain.

METHOD OF USE

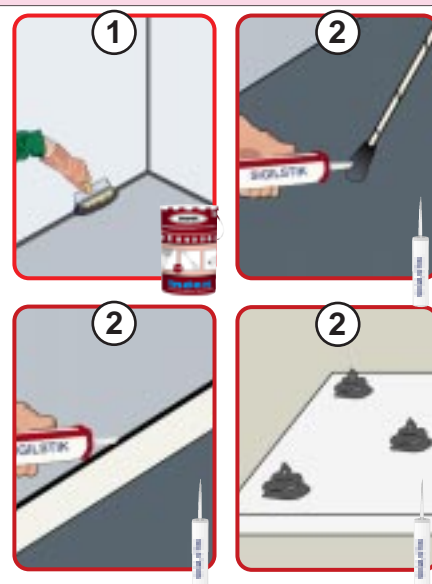
• SUBSTRATE PREPARATION

The surfaces to be sealed should be cleaned of any residue powder, crumbling or loose parts, oil, grease, bitumen or ice. Porous surfaces such as cement, mortar or masonry should be cleaned mechanically with a wire brush or grinding disk. **SIGILSTIK** is highly adhesive even without a prime coat on most supports but if the surface of the support is old and dusty we recommend applying a coat of INDEVER PRIMER E first (1).

• APPLICATION

SIGILSTIK should be applied at a temperature between +5°C and +40°C, without creating air bubbles during application. Use the sealant with a suitable gun (2), smoothing the surface by pressing down with a damp spatula to remove any bubbles. Any smoothing should be done before the skin of the sealant forms.

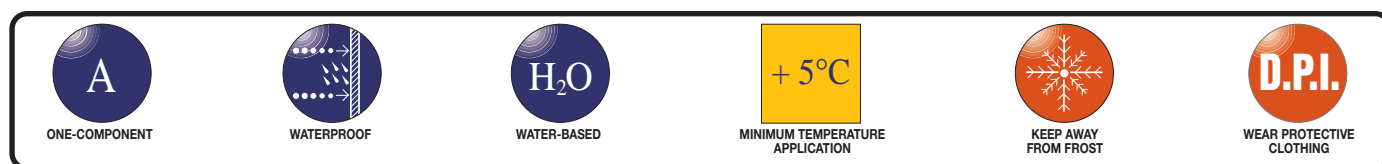
The polymerised sealant can only be removed mechanically. It can be painted with our SOLARIS product or with the water-based product INDECOLOR.



TECHNICAL CHARACTERISTICS

	Appearance	thixotropic paste
	Colour	black
	Specific weight (extruded foam)	1.03-1.05 kg/litre
	Solid content	62-65%
	Flammability	Not flammable
	Stability (in the closed cartridges stored in a dry place at +20°C max)	12 months

ring the numerous possible uses and the possible interference of conditions or elements beyond our control, we assume no responsibility regarding the results which are obtained. The purchasers, of their own accord and under their own responsibility, must establish the suitability of the product for the envisaged use.



ADVANTAGES

- Cheap and easy to apply.
- Highly workable and thixotropic for easy application both horizontally and vertically.
- Permanent elasticity.
- Highly resistant to UV rays.
- Odourless.
- Optimal yield and stability in time.

PRODUCT



PACKAGING

Boxes with 24 x310 ml cartridges.

The figures shown are average indicative figures relevant to current production and may be changed or updated by INDEX S.p.A at any time without previous warning. The advice and technical information provided, is what results from our best knowledge regarding the properties and the use of the product. Consider

• FOR ANY FURTHER INFORMATION OR ADVICE ON PARTICULAR APPLICATIONS, CONTACT OUR TECHNICAL OFFICE.
• IN ORDER TO CORRECTLY USE OUR PRODUCTS, REFER TO INDEX TECHNICAL SPECIFICATIONS

index
Construction Systems and Products

INTERNET: www.index-spa.com
E-MAIL: index@index-spa.it

Via G. Rossini, 22 - 37060 Castel D'Azzano (VR) - Italy - Tel. (+39)045.8546201 - Fax (+39)045.512444

